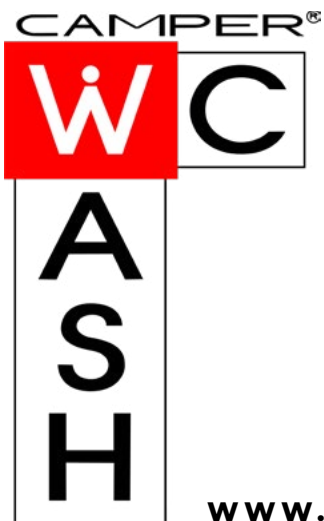


SINCE 2002

**ITALIAN EXCELLENCE
IN CAMPER SERVICE**



WWW.CAMPERWCWASH.COM

**CAMPER SERVICE PRODUCTION
AND REST AREA DESIGN**

CAMPER®



A
S
H

PRODUCT CATALOGUE



VIDEO



CAMPER SERVICE SPECIALISTS

In the early 2000s the camper service industry had not yet been invented. For those with campers, getting around and finding equipped rest areas was an adventure. The itineraries chosen necessarily had to include routes that crossed the few service areas that had a draining system, which in those years was a simple concrete manhole. Electricity wasn't a service that was offered, and drinking water was bought at the shop. But as we know, RVerS are freedom-loving adventurers and are not deterred by a lack of comfort. Indeed, when put to the test they rise to the challenge: it was precisely a family of camper lovers that came up with the idea for Camper Wc Wash.

We're talking about the *Foschi family* of Forlì – architects for generations – who between one stop and the next were thinking about developing a standardised line of equipment that could provide all the services required by campers. Specifically, the architect *Dario Foschi* was thinking not only about the drains and dump stations, but also about the columns that supply electricity and water. Dario knew exactly who could transform his project into reality. He turned to *Fulvio De Carlo*, who ran the Sela Cars company in Forlì with his father (who had been building and selling battery-powered baby cars all over the world since 1972), and who began to assemble his designs and test the first drains and columns. It took two years to sound out the needs of the market and to fine-tune the equipment: the products had to be easy to install and use, because neither RVerS nor rest area owners had ever seen anything like it.

The Camper Wc Wash brand was officially

launched in 2002, and it was the first in Europe to offer a complete range of equipment specific for camper services. The launch was electrifying: in a short time orders tripled and started arriving from all over Europe. It was a sign that the market absolutely needed that kind of product.

In just a few years the drain became essential for every equipped rest and camper service area: the underground plate was made of steel, could be driven over, and avoided any contact with dirty surfaces because it was self-cleaning. Camper Wc Wash was able to anticipate market needs. From the outset it focused on shipping orders quickly and making installation easy: the command columns were designed to be lightweight and easy to handle, and the electrical and plumbing systems used standard connections that could therefore be installed by anyone in any country using inexpensive parts that could be found anywhere. All that was needed was to lay simple electrical and water supply lines in order to provide the services. Upon request, Camper Wc Wash's technical department offered advice on installations and how to optimise the available space. No products installed required special maintenance.

From the beginning Camper Wc Wash made reliability and quality Made in Italy its strong points: its suppliers were all Italian and the electronics used were always top of the line.

The brand kept pace with evolving technologies and remained agile in adapting to a diversifying demand. While on the one hand it introduced digital technologies that facilitated access to services and made payment methods smarter, on the other it was atten-

tive to the changing market and the constant increase in people choosing to spend their leisure time outdoors. Today's motor caravanners are no longer those of the early 2000s: they now have many different needs, tastes and ages, and their travels no longer follow standard routes but are rather guided by their desire to reach various tourist and leisure destinations. That's why the equipment provided by Camper Wc Wash can be found installed not only in service or rest areas of tourist sites, but also in holiday farms, resorts, shopping centres, sports facilities and attractions. Local governments find the Camper Wc Wash brand to be a practical ally helping to maximise tourism in their local areas, as its equipment helps facilitate longer stays. Camper Wc Wash has been a supplier to Autostrade per l'Italia and major oil companies in Italy since 2008.

Camper Wc Wash provides its range of camper service equipment throughout Europe. Agents are available to provide any information needed and to assist customers all the way to installation and commissioning of the system.

Camper Wc Wash provides its range of camper service equipment throughout Europe. Agents are available to provide any information needed and to assist customers all the way to installation and commissioning of the system.

Camper Wc Wash is a brand of Sela Cars, the world's leading manufacturer of battery-powered baby cars for more than 50 years. It is the supplier of the largest amusement parks and the most popular tourist locations for families. Camper Wc Wash products are CE certified.



750+

TOURIST FACILITIES

Including campsites, holiday farms, hotels, rest areas



250+

MUNICIPAL AREAS

Free and paid



100+

SERVICE AREAS

On the European motorway network



50+

PRIVATE AREAS

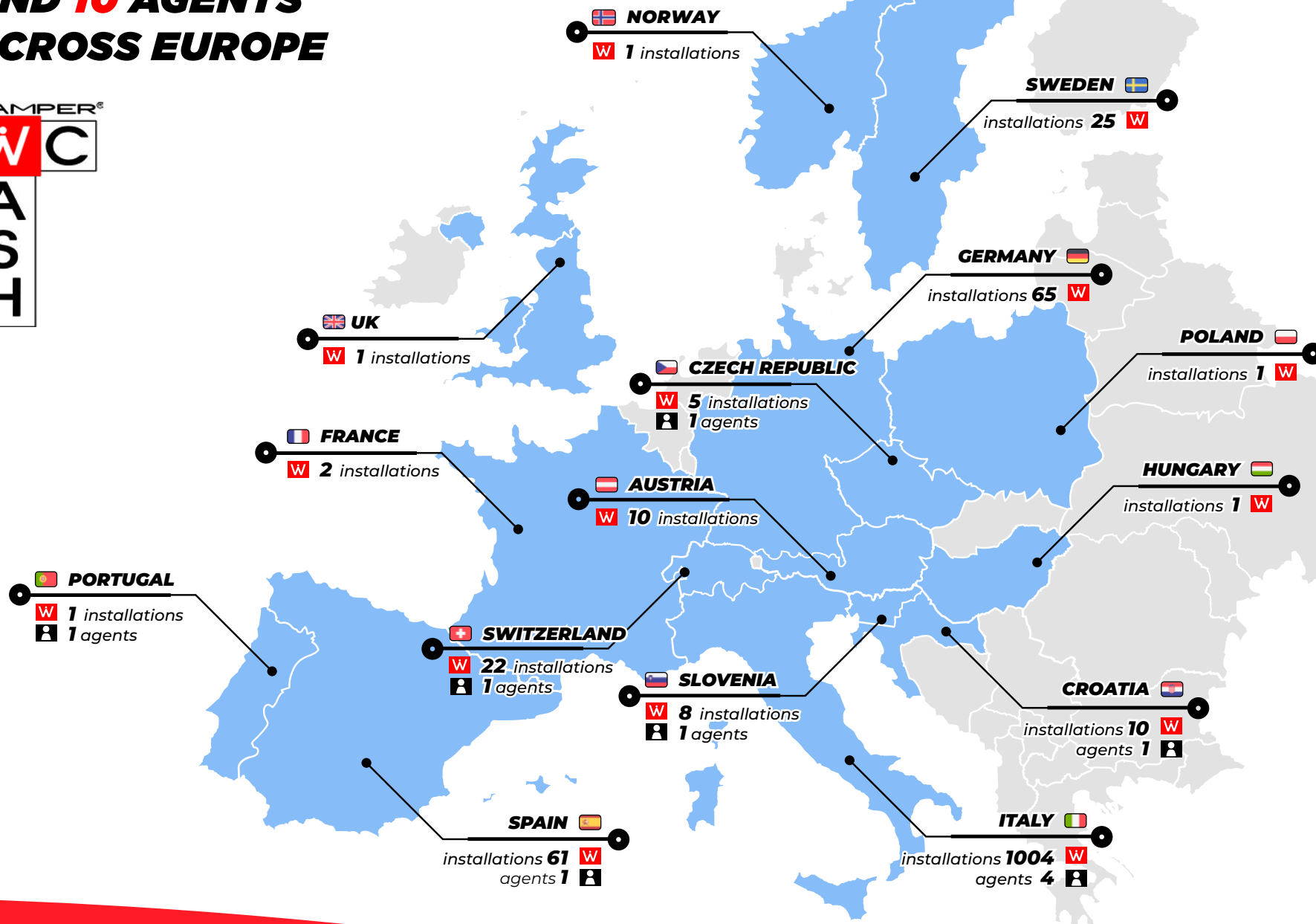
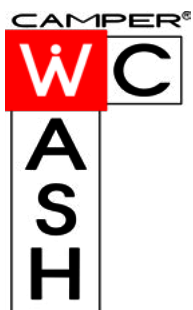
Custom designed



50+

STORAGE AREAS

OVER **1,200** INSTALLATIONS AND **10** AGENTS ACROSS EUROPE





REST AREA DESIGN

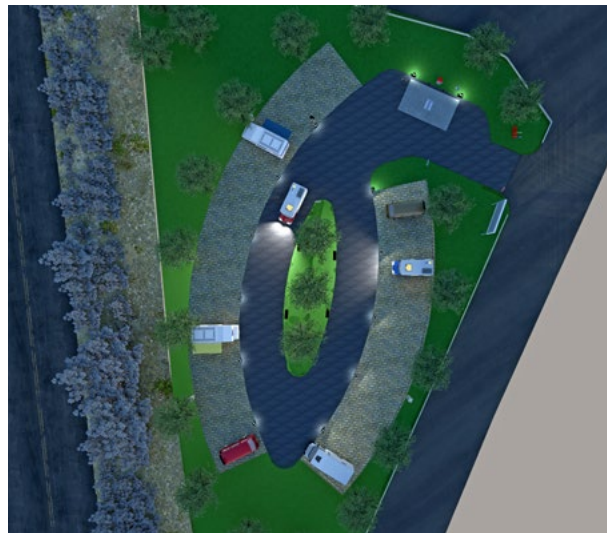


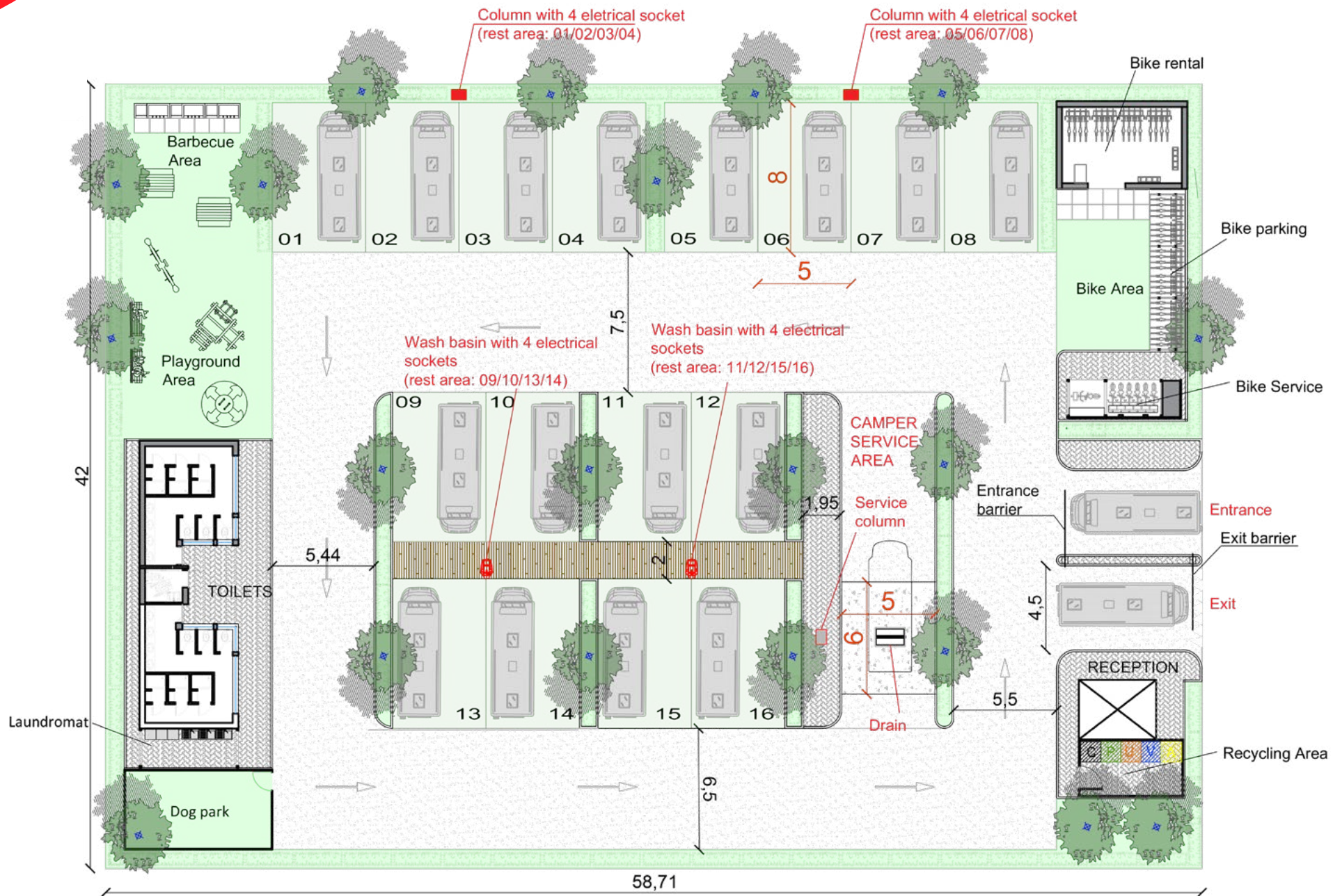
Camper Wc Wash offers its customers a rest area design service.

When requested by the customer, our experience in the field makes it possible for us to recommend an installation plan for our equipment that makes the best use of the layout of the target location, optimising space.

For customers who instead have an unfurnished area and want to develop a completely new camper service area, the **Foschi & Nolletti** firm of architects can design a new custom rest area. The architects Foschi and Nolletti are established specialists in the field and can design areas of any type for any location.


These areas, equipped on the one hand with all the basic logistical features (manoeuvring space, security and green areas), on the other hand offer tailor-made options for the customer to choose from. Any type of infrastructure – from recreational to luxury – can be integrated and customised according to the target users.









P-STEEL	DRAINS	14
	P-100 extra small	18
	P-101 small basic	20
	P-102 medium basic	22
	P-104 large basic	24
	PS-01 small modular	26
	PM-02 medium modular	27
	PL-04 large modular	28
S-STEEL	SERVICE COLUMNS	30
	S-209 - free system	32
	S-209-PAY - pay system	34
	S-210 - free system	36
	S-210-PAY - pay system	40
	S-210-RE - remote pay system	42
	S-210-EP - e-power pay system	44
V-STEEL	EMPTYING COLUMNS	46
	V-304 - free system	48
	V-304-PAY - pay system	50
	V-304-RE - remote pay system	52

A-STEEL	WATER SUPPLY COLUMNS	54
----------------	-----------------------------	-----------

A-404 - free system	56
A-404-PAY - pay system	58
A-404-RE - remote pay system	60

E-STEEL	COLUMNS FOR ELECTRICITY	62
----------------	--------------------------------	-----------

E-503 - free system	64
E-503-RE - remote activation	66
EP-503 - e-power pay system	68
E-509-PAY - pay system	70
E-508 - free system	72
E-508-RE - remote activation	74
E-510 - free system	76
E-510-RE - remote activation	78
E-513 - free system	79
E-520 - free system	80
E-511-T-PAY - pay system	82
E-512-T-PAY - pay system	84
E-502 - free system	85
E-502-RE - remote activation	86
EP-502 - e-power pay system	88

E-POWER SYSTEM	89
-----------------------	-----------

G-STEEL	MANAGEMENT SYSTEMS	90
----------------	---------------------------	-----------

G-801 - free system	90
G-800 - pay system	91

L-STEEL	MULTI-PURPOSE WASH BASINS	92
----------------	----------------------------------	-----------

L-700 - free system	94
----------------------------	----

F-STEEL	firefighting columns	96
----------------	----------------------	----

C-STEEL	tanks	97
----------------	-------	----

O-STEEL	accessories	98
----------------	-------------	----

	contacts	100
--	----------	-----

The company has made every effort to provide accurate, precise information in this catalogue. Technical specifications, photos and colours may vary. Please contact us for any requests. As a part of the policy of continuous product improvement, the company reserves the right to change product specifications of the Camper WC Wash line without notice.

post-steel



p-steel

DRAINS

FUNCTION

The drain is one of the main products of the Camper Wc Wash system because it's an indispensable element in any equipped camper van area. It serves to dump all liquid substances (wastewater) that are produced by human activity.

Our drains are self-cleaning. They collect and convey grey water into the sewage system and the wide mesh grille with central drainage channel guarantees better cleaning of the surface hit by sewage. Finally, the nozzles allow the drain to be cleaned.

The self-cleaning system of Camper Wc Wash drains.
For drains without a self-cleaning system, the nozzles are equipped with a closing cap.



FEATURES

The drains are made entirely of AISI 304 steel: unlike concrete and fibreglass, this allows our drains to be very efficient because it's a material that doesn't absorb sewage, is resistant to acids and frost, and doesn't degrade over time.

Our drains can even be installed in locations where temperatures drop below zero because the ICE heating system guarantees operation at low temperatures. The system consists of a thermostat-controlled heating cable that

maintains the minimum efficient temperature and thus prevents the formation of ice and bursting of pipes.

The special structure of the drains also allows them to be driven over by even the heaviest vehicles because there's no risk of damage or deformation.

All drains are managed by s-steel columns that can be customised with all kinds of options. Cleaning and washing are thus automated,

and the user never comes into contact with any dirty surfaces.

The design of our drains is the result of decades of research that has enabled our company to excel in the camper service sector: the product is reliable, hygienic and performs in all conditions.

P-steel drains are available in four sizes and with various options, depending on the requirements of the facility.

The company has also recently made the drains available in a **disassembled version**: the customer takes care of the assembly, thereby reducing costs. In this case, the drains are available in 3 sizes and are delivered in a kit complete with everything needed for installation.



Camper Wc Wash drains can be driven over.

1. The large mesh grille with drain channel that guarantees a better cleaning of the surface.

2. The grille cover to be placed over the channel to prevent leaves from clogging it.

3. Users of the Camper Wc Wash drains never come into contact with the dirty surfaces. The various steps are automated by the command columns.

4. The Camper Wc Wash range of equipment is reliable and quick to install. Its various fittings are standard and the components are readily available everywhere.



P-100 EXTRA SMALL

Ground drain made of AISI 304 stainless steel for grey water / wastewater drainage from campers complete with plate with cover grille, cleaning system, serviceable siphon, anchoring chassis and adjustable feet for levelling.



MODEL

P-100-P Drain plate with steel cover grille

TECHNICAL SPECIFICATIONS

Material	AISI 304 stainless steel
Dimensions	W 70 x D 80 x H 40 cm
Thickness	3 mm
Water connection	3/4"

OPTIONAL

P-100-LAV	Cleaning system with 5 nozzles (arranged on three sides) and tubing
P-100-S	Serviceable siphon Ø 100 mm
P-100-SA	Siphon + extender Ø 100/110 mm
P-100-C	Closing system with rainwater separator valve
P-100-ICE	ICE heating system
P-100-T	Chassis for installation



P-101 SMALL BASIC

Ground drain made of AISI 304 stainless steel for grey water / wastewater drainage from campers complete with plate with cover grille, cleaning system, serviceable siphon, anchoring chassis and adjustable feet for levelling.



MODEL

P-101-P Drain plate with steel cover grille

TECHNICAL SPECIFICATIONS

Material	AISI 304 stainless steel
Dimensions	W 100 x D 110 x H 40 cm
Thickness	3 mm
Water connection	1"

OPTIONAL

P-101-LAV	Cleaning system with 7 nozzles (arranged on three sides) and tubing
P-101-S	Serviceable siphon Ø 125 mm
P-101-C	Closing system with rainwater separator valve
P-101-COV	Grille cover to prevent leaves from obstructing the drain
P-101-ICE	ICE heating system
P-101-T	Chassis for installation



P-102 MEDIUM BASIC

Ground drain made of AISI 304 stainless steel for grey water / wastewater drainage from campers complete with plate with cover grille, cleaning system, serviceable siphon, anchoring support chassis and adjustable feet for levelling.



MODEL

P-102-P Drain plate with steel cover grille

TECHNICAL SPECIFICATIONS

Material	AISI 304 stainless steel
Dimensions	W 160 x D 97 x H 40 cm
Thickness	3 mm
Water connection	1"

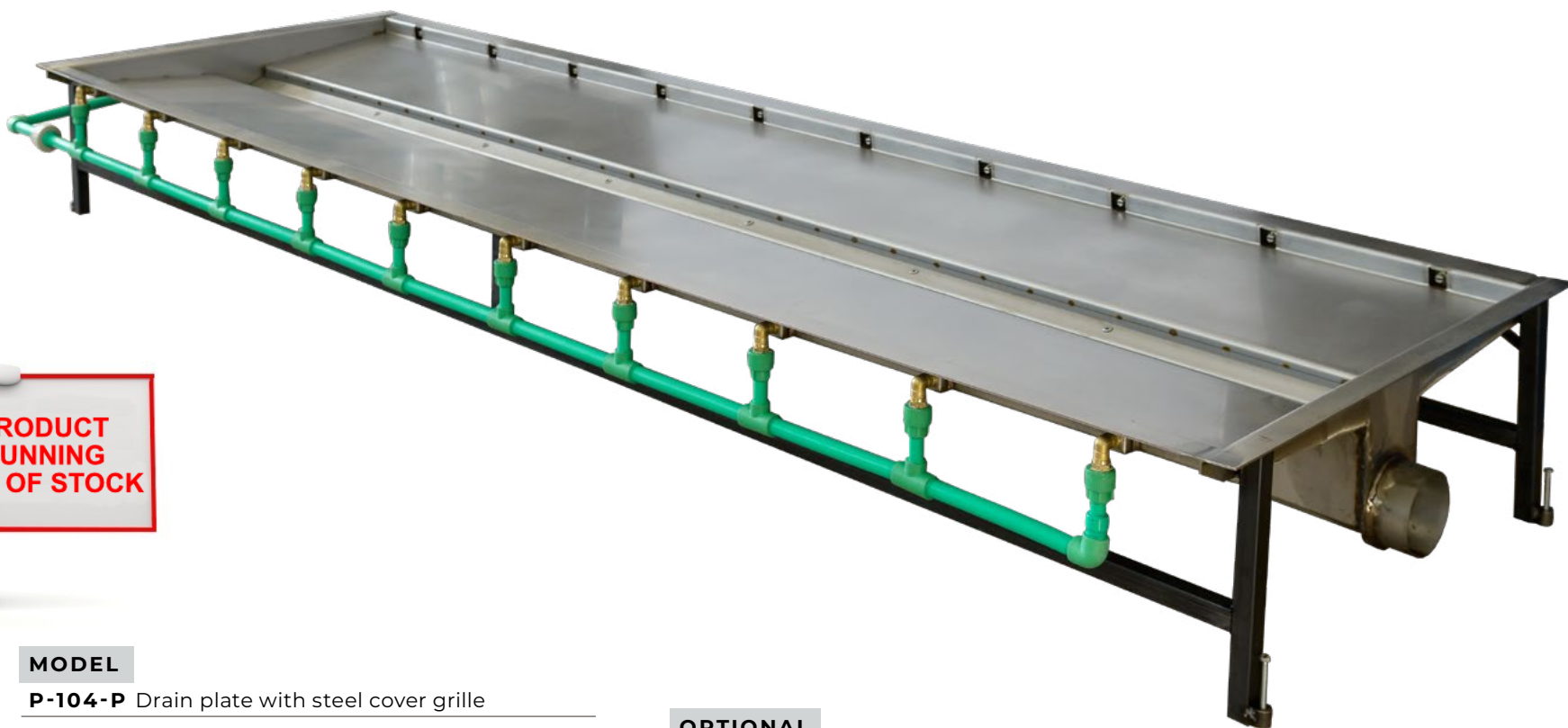
OPTIONAL

P-102-LAV	Cleaning system with 11 nozzles (arranged on three sides) and tubing
P-102-S	Serviceable siphon Ø 125 mm
P-102-C	Closing system with rainwater separator valve
P-102-COV	Grille cover to prevent leaves from obstructing the drain (<i>photo</i>)
P-102-ICE	ICE heating system
P-102-T	Chassis for installation



P-104 LARGE BASIC

Ground drain made of AISI 304 stainless steel for grey water / wastewater drainage from campers complete with plate with cover grille, cleaning system, serviceable siphon, anchoring chassis and adjustable feet for levelling.



MODEL

P-104-P Drain plate with steel cover grille

TECHNICAL SPECIFICATIONS

Material	AISI 304 stainless steel
Dimensions	W 309 x D 97 x H 40 cm
Thickness	3 mm
Water connection	1"

OPTIONAL

P-104-LAV	Cleaning system with 21 nozzles (arranged on three sides) and tubing
P-104-S	Serviceable siphon Ø 125 mm
P-104-C	Closing system with rainwater separator valve
P-104-COV	Grille cover to prevent leaves from obstructing the drain
P-104-ICE	ICE heating system
P-104-T	Chassis for installation



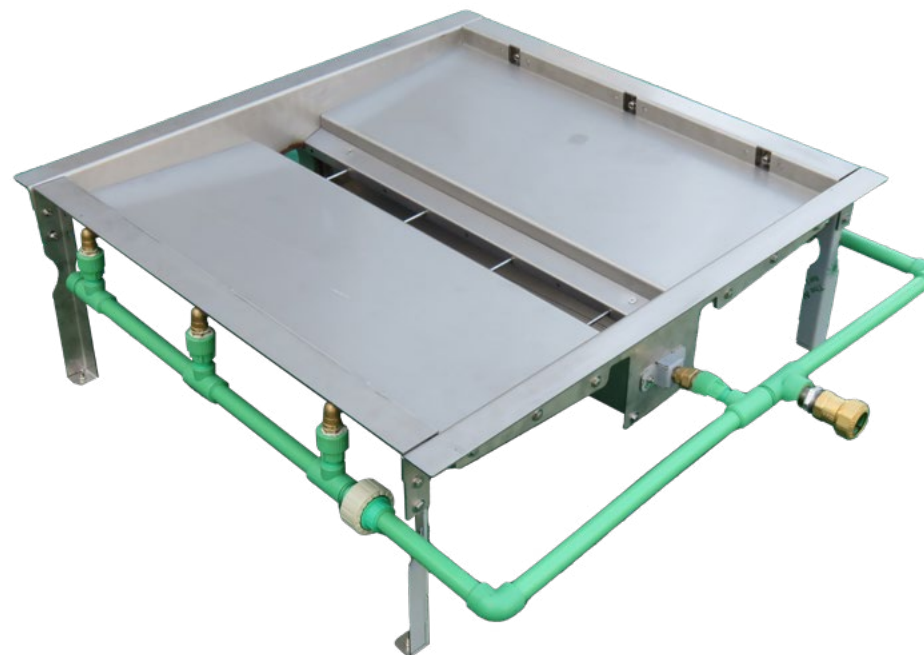
PS-01 SMALL MODULAR

Drains in disassembled version

Ground drain made of AISI 304 stainless steel for grey water / wastewater drainage from camper vans.

The drain is supplied in a kit that includes: plate with grille, cleaning system, serviceable siphon and adjustable brackets for levelling.

The kit includes: screws and wrenches for assembly and instruction manual.



MODELS

PS-01K	Drain to be assembled (kit of parts to be assembled)
PS-01A	Assembled drain (kit includes plate with grille and adjustable brackets for installation)

TECHNICAL SPECIFICATIONS

Material	AISI 304 stainless steel
Dimensions	W 93 x D 96 x H 35 cm
Thickness	3 mm
Water connection	1"

OPTIONAL

PS-01-LAV	Cleaning system with 7 nozzles (arranged on three sides) and tubing
PS-01-S	Serviceable siphon Ø 125 mm
PS-01-C	Closing system with rainwater separator valve
PS-01-ICE	ICE heating system
PS-01-COV	Grille cover to prevent leaves from obstructing the drain

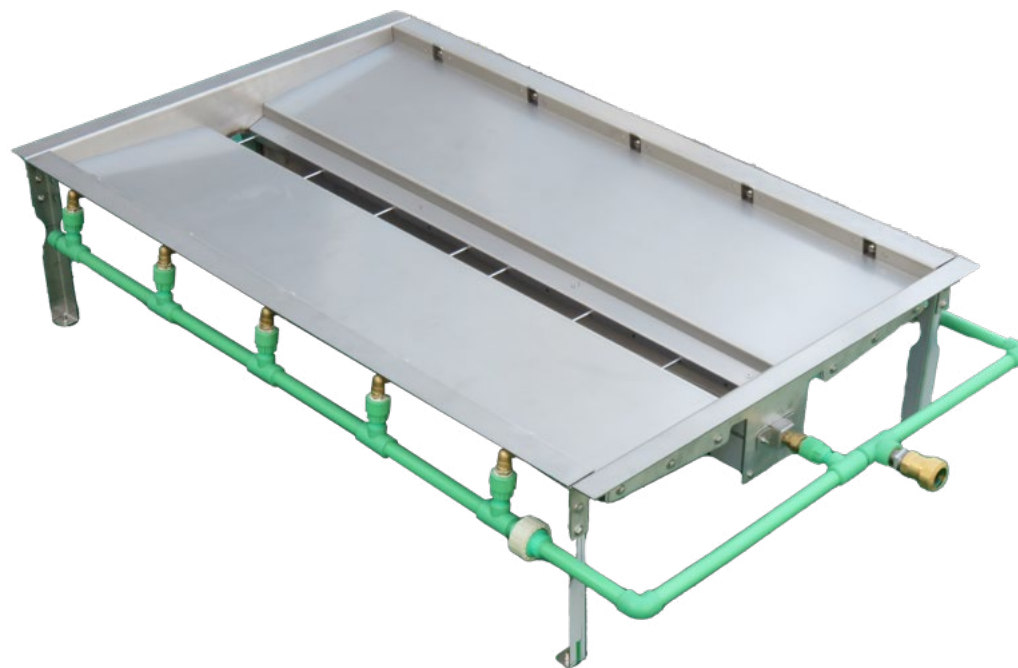
PM-02 MEDIUM MODULAR

Drains in disassembled version

Ground drain made of AISI 304 stainless steel for grey water / wastewater drainage from camper vans.

The drain is supplied in a kit that includes: plate with grille, cleaning system, serviceable siphon and adjustable brackets for levelling.

The kit includes: screws and wrenches for assembly and instruction manual.



MODELS

PM-02K	Drain to be assembled (kit of parts to be assembled)
PM-02A	Assembled drain (kit includes plate with grille and adjustable brackets for installation)

TECHNICAL SPECIFICATIONS

Material	AISI 304 stainless steel
Dimensions	W 149 x D 96 x H 35 cm
Thickness	3 mm
Water connection	1"

OPTIONAL

PM-02-LAV	Cleaning system with 11 nozzles (arranged on three sides) and tubing
PM-02-S	Serviceable siphon Ø 125 mm
PM-02-C	Closing system with rainwater separator valve
PM-02-ICE	ICE heating system
PM-02-COV	Grille cover to prevent leaves from obstructing the drain

PL-04 LARGE MODULAR

Drains in disassembled version

Ground drain made of AISI 304 stainless steel for grey water / wastewater drainage from camper vans.

The drain is supplied in a kit that includes: plate with grille, cleaning system, serviceable siphon and adjustable brackets for levelling.

The kit includes: screws and wrenches for assembly and instruction manual.



MODELS

PL-04K	Drain to be assembled (kit of parts to be assembled)
PL-04A	Assembled drain (kit includes plate with grille and adjustable brackets for installation)

TECHNICAL SPECIFICATIONS

Material	AISI 304 stainless steel
Dimensions	W 287 x D 96 x H 35 cm
Thickness	3 mm
Water connection	1"

OPTIONAL

PL-04-LAV	Cleaning system with 22 nozzles (arranged on three sides) and tubing
PL-04-S	Serviceable siphon Ø 125 mm
PL-04-C	Closing system with rainwater separator valve
PL-04-ICE	ICE heating system (only for assembled version)
PL-04-COV	Grille cover to prevent leaves from obstructing the drain

lets-s-



s-steel

SERVICE COLUMNS

FUNCTION

The service columns are essential for the drains' operation: they are control units that command the washing operations on the dump plate.

We offer both columns that manage the simple cleaning function, as well as multifunctional columns that also serve as dump station for the drainage of camper vans' extractable cassette toilets (for sewage) and the supply of drinking water.

FEATURES

Our columns can be customised according to the needs of the facility. You can choose between different types of cleaning and pay systems:

1. Manual with lever tap
2. Manual with button
3. Automatic with photocell
4. Automatic with payment management (via token/coin/credit card reader/e-power system)
5. Remotely activated

The columns can also be equipped with taps for manual cleaning of the drains and for supplying drinking water. Every column features the instructions for use.

The columns accompanying our drains can even be installed in locations where temperatures drop below zero because the ICE heating system guarantees operation at low temperatures. The system consists of a thermostat-controlled heating cable that maintains the minimum efficient temperature and thus prevents the formation of ice and bursting of pipes.

An anti-condensation system is also available for columns installed in areas with high humidity levels.



S-209 free system

AISI 304 stainless steel service column **with free system.**

It manages the cleaning of the drain by means of a **lever tap or a timed button or photocell** that detects the vehicle when it arrives (pre-washing) and leaves (tank cleaning).

A tap for supplying drinking water can also be added to the column as an option.



model S-209-L



model S-209-P



model S-209-F

MODELS

S-209-L	Plate cleaning system activated by a lever tap
S-209-P	Plate cleaning system activated by an electric timed button <i>(photo)</i>
S-209-F	Automatic plate cleaning system activated by a photocell

TECHNICAL SPECIFICATIONS

Material	AISI 304 stainless steel
Dimensions	W 36 x D 36 x H 120 cm
Thickness	1.2 mm
Water connections	1" (with items P-100, P-101 and PS-01) 1 - 1/4" (with item P-102 and PM-02) 1 - 1/2" (with item P-104 and PL-04)
Electrical connections	220v

OPTIONAL

S-209-ICE	ICE heating system
WC-LED-1	Type 1 perimeter LED lighting kit (for S-209-F)
WC-LED-3	Type 3 perimeter LED lighting kit (for S-209-P, S-209-L)
S-209-T	Chassis for installation

ADDITIONAL TAP (mounted on the left)

RUB1-FLY	Lever tap with protection
RUB1	Lever tap with rubber and lance
RUB1-PRES	Pressure tap with protection and push-button
RUB-TEMP	Single tap timing



S-209-PAY pay system

AISI 304 stainless steel service column **with coin or token and/or credit card pay system.**

It manages the cleaning of the drain with a **photocell** that detects the vehicle when it arrives (pre-washing) and leaves (tank cleaning).

The column is equipped with perimeter LED lighting.

A tap for supplying drinking water can also be added to the column as an option.

Note: the pay system does not include any airtight closing parts.



MODELS

S-209-PAY	With coin mechanism. Plate cleaning system activated by a photocell
S-209-CARD	With credit card reader. Plate cleaning system activated by a photocell
S-209-PAY-CARD	With coin mechanism and credit card reader. Plate cleaning system activated by a photocell

TECHNICAL SPECIFICATIONS

Material	AISI 304 stainless steel
Dimensions	W 36 x D 36 x H 157 cm
Thickness	1.2 mm
Water connections	1" (with items P-100, P-101 and PS-01) 1 - 1/4" (with item P-102 and PM-02) 1 - 1/2" (with item P-104 and PL-04)
Electrical connections	220v

OPTIONAL

S-209-ICE	ICE heating system
S-209-T	Chassis for installation

ADDITIONAL TAP (mounted on the left)

RUB1-PAY	Lever tap with rubber and lance and with timed electric button
RUB1-FLY-PAY	Lever tap with protection and timed electric button (<i>photo</i>)



model **S-209-PAY**



model **S-209-CARD**



model **S-209-PAY-CARD**

s-steel

S-210 free system + water supply + cassette drainage

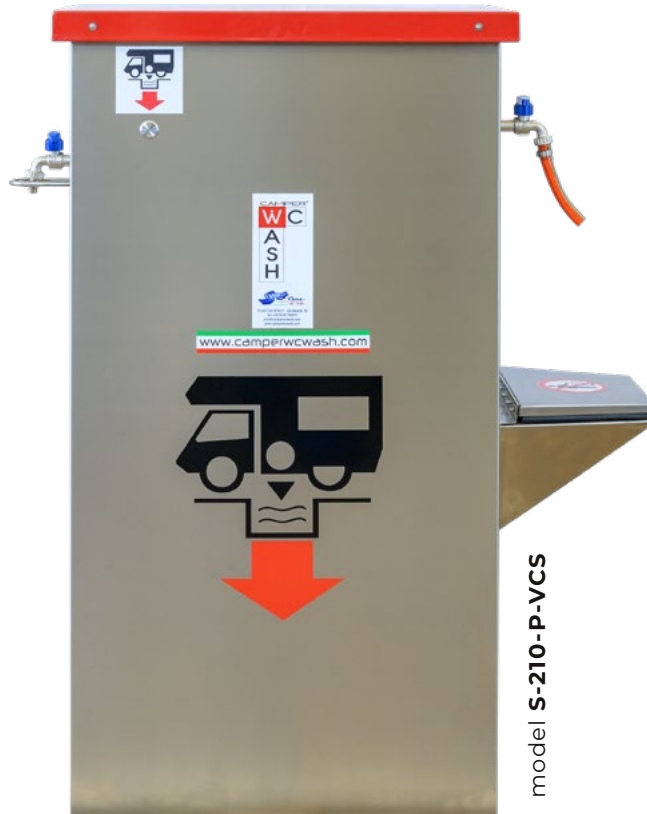
AISI 304 stainless steel service column with **free system**.

It manages the cleaning of the drain by means of a **timed electric button or photocell** that detects the vehicle when it arrives (pre-washing) and leaves (tank cleaning). The column is also equipped with an **extractable cassette drainage system** (the system is self-cleaning by means of nozzles installed inside the drain, activated by a button or photocell) and a **drinking water supply** system by means of a timed or lever tap.

This column includes an internal **sanitising system** as an additional option. The sanitising kit consists of an immersion pump and two canisters with five litres of sanitising liquid each. The system injects a percentage of liquid into the water, cleaning the dumping area.

MODEL S-210-P

Drain cleaning via **button**



MODELS

S-210-P	Drain cleaning via button
S-210-F	Drain cleaning via photocell

TECHNICAL SPECIFICATIONS

Material	AISI 304 stainless steel
Dimensions	W 63 x D 46 x H 120 cm
Thickness	1.2 mm
Water connections	1" (with items P-100, P-101 and PS-01) 1 - 1/4" (with item P-102 and PM-02) 1 - 1/2" (with item P-104 and PL-04)
Electrical connections	220v

VARIANTS TO BE DEFINED

S-210-RUB	Exposed lever tap for drinking water supply
S-210-PR	Protection door kit with lever tap for drinking water supply (<i>photo</i>)
S-210-VCS	Cassette dump station with door - washing with timed electric button
S-210-VCS-F	Cassette dump station with door - washing with photocell
S-210-TUBO	Cassette dump station with hose - washing with timed electric button

OPTIONAL

R-PRES	Push-button pressure tap for rinsing extractable cassettes
S-210-ICE	ICE heating system
S-210-T	Chassis for installation
RUB-TEMP	Single tap timing
WC-LED-2	Perimeter LED lighting kit
O-801	Sanitising system





MODEL S-210-F Drain cleaning via **photocell**



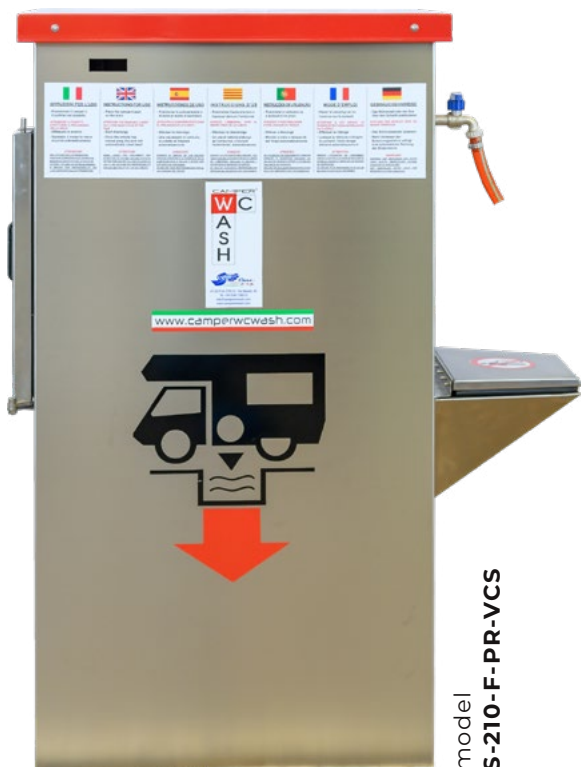
model **S-210-F**



model **S-210-F-VCS**



model **S-210-F-PR**



model
S-210-F-PR-VCS



S-210-PAY pay system + water supply + cassette drainage

S-210-PAY



S-210-PAY-CARD



S-210-CARD



S-210-RUB



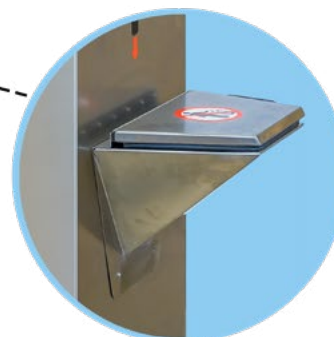
S-210-PR



model S-210-PAY



S-210-TUBO



S-210-VCS

AISI 304 stainless steel service column **with coin or token and/or credit card pay system**. It manages the cleaning of the drain using **a photocell** that detects the vehicle when it arrives (pre-washing) and leaves (tank cleaning). The column is equipped with an **extractable cassette drainage system** (the system is self-cleaning by means of nozzles installed inside the drain, activated by a photocell) and a **drinking water supply system** by means of a timed tap. **Perimeter LED lighting included.**

This column includes an internal **sanitising system** as an additional option. The sanitising kit consists of an immersion pump and two canisters with five litres of sanitising liquid each. The system injects a percentage of liquid into the water, cleaning the dumping area.

Note: the paid system does not include any airtight closing parts.

The S-210 enables maximum customisation. It is possible to choose the type of water supply (with or without door) or the type of cassette drainage (tube or dump station with door). The payment method can also be customised: tokens/coins only (S-210-PAY), cards only (S-210-CARD), or combined (S-210-PAY-CARD).

MODELS

S-210-PAY-ACQUA	With coin mechanism for water supply
S-210-PAY-3F	With coin mechanism for water supply + drain cleaning + cassette drainage
S-210-CARD-ACQUA	With credit card reader for water supply
S-210-CARD-3F	With credit card reader for water supply + drain cleaning + cassette drainage
S-210-PAY-CARD-AC	With coin mechanism / credit card reader for water supply
S-210-PAY-CARD-3F	With coin mechanism / credit card reader for water supply + drain cleaning + cassette drainage

TECHNICAL SPECIFICATIONS

Material	AISI 304 stainless steel
Dimensions	W 63 x D 46 x H 153 cm
Thickness	1.2 mm
Water connections	1" (with items P-100, P-101 and PS-01) 1 - 1/4" (with item P-102 and PM-02) 1 - 1/2" (with item P-104 and PL-04)
Electrical connections	220v

VARIANTS TO BE DEFINED

S-210-RUB	Exposed lever tap for drinking water supply
S-210-PR	Protection door kit with lever tap for drinking water supply
S-210-VCS	Cassette dump station with door - washing with photocell
S-210-TUBO	Cassette dump station with hose - washing with photocell

OPTIONAL

S-210-ICE	ICE heating system
S-210-T	Chassis for installation
O-801	Sanitising system



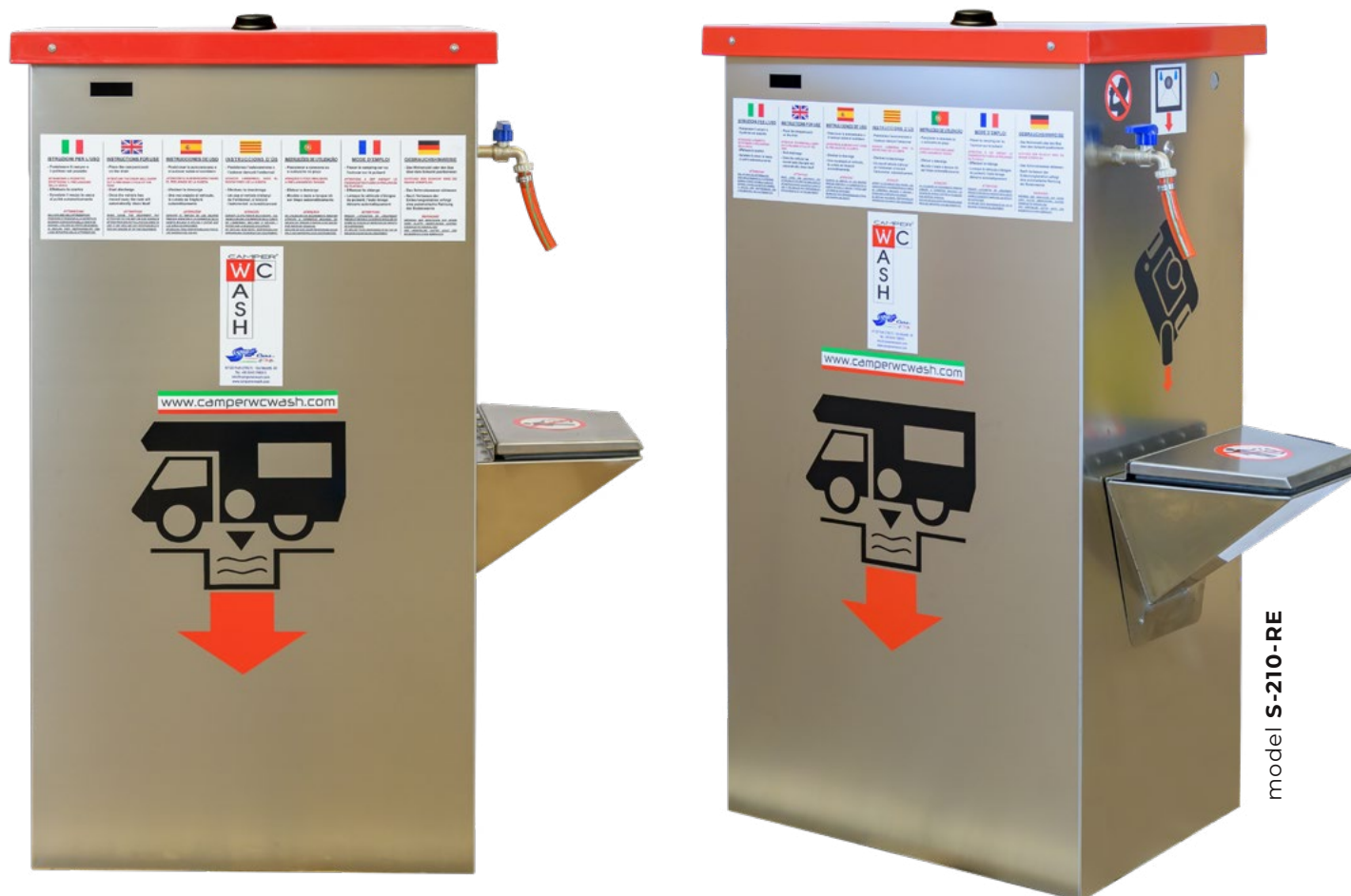
S-210-RE remote pay system

AISI 304 stainless steel service column **with pay system, remotely activated** via G-800 till (see page 91), complete with modem and external antenna for wireless communication.

It manages the cleaning of the drain using a **photocell** that detects the vehicle when it arrives (pre-washing) and leaves (tank cleaning). The column is also equipped with an **extractable cassette drainage system** (the system is self-cleaning by means of nozzles installed inside the drain, activated by a button or photocell) and a **drinking water supply system** by means of a timed tap.

This column includes an internal **sanitising system** as an additional option. The sanitising kit consists of an immersion pump and two canisters with five litres of sanitising liquid each. The system injects a percentage of liquid into the water, cleaning the dumping area.

Note: the paid system does not include any airtight closing parts.



MODEL

S-210- RE Automatic plate cleaning system activated by a **photocell** via till G-800

TECHNICAL SPECIFICATIONS

Material	AISI 304 stainless steel
Dimensions	W 63 x D 46 x H 120 cm
Thickness	1.2 mm
Water connections	1" (with items P-100, P-101 and PS-01) 1 - 1/4" (with item P-102 and PM-02) 1 - 1/2" (with item P-104 and PL-04)
Electrical connections	220v

VARIANTS TO BE DEFINED

S-210-RUB	Exposed lever tap for drinking water supply
S-210-PR	Protection door kit with lever tap for drinking water supply
S-210-VCS	Cassette dump station with door - washing with timed electric button
S-210-VCS-F	Cassette dump station with door - washing with photocell
S-210-TUBO	Cassette dump station with hose - washing with photocell

OPTIONAL

R-PRES	Push-button pressure tap for rinsing extractable cassettes
S-210-ICE	ICE heating system
S-210-T	Chassis for installation
RUB-TEMP	Single tap timing
WC-LED-2	Perimeter LED lighting kit
O-801	Sanitising system



S-210-EP e-power pay system + water supply + cassette drainage

Paid service column managed by the **e-power system**. This system makes it possible to control the provision of services directly at the column. The user is provided with a rechargeable key contact which, when brought close to the column sensor, activates and deactivates services. The operator can choose how to deliver the services (more info on p. 89). The column is made of AISI 304 stainless steel and is used to control the drain washing by means of a **photocell** detecting the vehicle entering (pre-washing) and exiting (tank washing rinse).

The column is also equipped with an **extractable cassette drainage system** (the system is self-cleaning by means of nozzles installed inside the drain, activated by a photocell) and a **drinking water supply system** by means of a lever tap.

This column includes an **internal sanitising system** as an additional option. The sanitising kit consists of an immersion pump and two canisters with five litres of sanitising liquid each. The system injects a percentage of liquid into the water, cleaning the dumping area.

Note: the paid system does not include any airtight closing parts.



MODEL

S-210- EP Drain cleaning via **photocell** with **e-power system**

TECHNICAL SPECIFICATIONS

Material	AISI 304 stainless steel
Dimensions	W 63 x D 46 x H 120 cm
Thickness	1.2 mm
Water connections	1" (with items P-100, P-101 and PS-01) 1 - 1/4" (with item P-102 and PM-02) 1 - 1/2" (with item P-104 and PL-04)
Electrical connections	220v

VARIANTS TO BE DEFINED

S-210-RUB	Exposed lever tap for drinking water supply
S-210-PR	Protection door kit with lever tap for drinking water supply (<i>photo</i>)
S-210-VCS	Cassette dump station with door - washing with timed electric button
S-210-TUBO	Cassette dump station with hose - washing with photocell

OPTIONAL

R-PRES	Push-button pressure tap for rinsing extractable cassettes
S-210-ICE	ICE heating system
S-210-T	Chassis for installation
WC-LED-2	Perimeter LED lighting kit



v-steel



v-steel

EMPTYING COLUMNS

FUNCTION

The v-steel columns are used for draining/emptying sewage, cassettes and extractable tanks in campers.

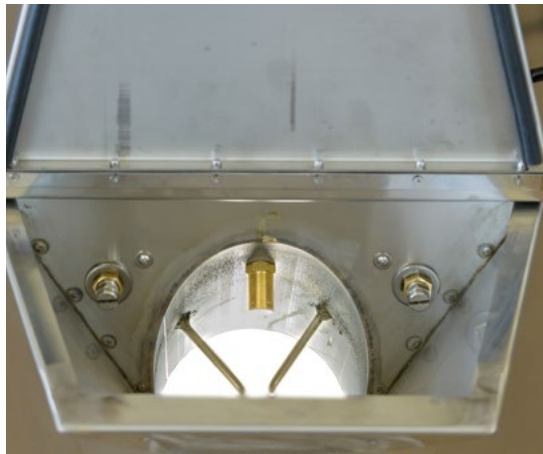
They feature remarkable ergonomics because they are designed with the aim of avoiding contact with potentially dirty surfaces. When emptying cassettes no sewage is spilled.

The drainage inlet is designed to prevent the insertion of foreign bodies or waste (*photo below*): our columns therefore guarantee safe, uninterrupted service, and require little maintenance in public spaces.

FEATURES

The columns are equipped with a cleaning system for the drain inside the door by means of stainless steel nozzles operated with a foot pedal tap, push button or photocell, and also with a tap for rinsing the cassette.

The v-steel draining columns can even be installed in locations where temperatures drop below zero because the ICE heating system guarantees operation at low temperatures. The system consists of a thermostat-controlled heating cable that maintains the minimum efficient temperature and thus prevents the formation of ice and bursting of pipes.



V-304 free system

Column for the drainage of camper van extractable cassette toilets made of AISI 304 stainless steel **with free system**.

Equipped with a cleaning system for the drain inside the door by means of three stainless steel nozzles operated with a foot pedal, push button or photocell, and with a tap for rinsing the cassette.

On request, we **also supply the column with an e-power pay system** (see page 89).





MODELS

V-304-RP	With cleaning system using a foot pedal tap <i>(photo)</i>
V-304-P	With cleaning system using a button
V-304-F	With cleaning system using a photocell

TECHNICAL SPECIFICATIONS

Material	AISI 304 stainless steel
Dimensions	W 36 x D 36 x H 120 cm
Thickness	1.2 mm
Water connections	1/2"
Electrical connections	220v (for models V-304-F, V-304-P, V-304-ICE)

OPTIONAL

V-304-ICE	ICE heating system
V-304-T	Chassis for installation
WC-LED-1	Perimeter LED lighting kit (V-304-F)
WC-LED-3	Perimeter LED lighting kit (V-304-RP, V-304-P)

ADDITIONAL TAPS (mounted on the left)

RUB1	Lever tap with rubber and lance
RUB1-FLY	Lever tap with protection <i>(photo)</i>
RUB1-PRES	Pressure tap with protection and push-button
RUB-TEMP	Single tap timing

OPTIONAL TAP

R-PRES	Push-button pressure tap for rinsing cassettes
---------------	--

V-304-PAY pay system

AISI 304 stainless steel column for the drainage of extractable cassette toilets of campers **with coin or token and/or credit card pay system.** Equipped with a cleaning system for the drain inside the door by means of three stainless steel nozzles operated with a photocell, and with a tap for rinsing the cassette. **Perimeter LED lighting included.**

Note: the paid system does not include any airtight closing parts.



MODELS

V-304-PAY	With coin mechanism
V-304-CARD	With credit card reader
V-304-PAY-CARD	With coin mechanism / credit card reader

TECHNICAL SPECIFICATIONS

Material	AISI 304 stainless steel
Dimensions	W 36 x D 36 x H 157 cm
Thickness	1.2 mm
Water connections	1/2"
Electrical connections	220v

OPTIONAL

V-304-ICE	ICE heating system
V-304-T	Chassis for installation

ADDITIONAL TAPS (mounted on the left)

RUB1-PAY	Lever tap with rubber and lance and with timed electric button (<i>photo</i>)
RUB1-FLY-PAY	Lever tap with protection and timed electric button



V-304-RE remote pay system

Column for the drainage of extractable cassette toilets made of AISI 304 stainless steel **with pay system remotely activated via till G-800** (see page 91), complete with modem and external wireless antenna.

Equipped with a cleaning system for the drain inside the door by means of three stainless steel nozzles operated with a button, and with a timed tap for rinsing the cassette.

Note: the paid system does not include any airtight closing parts.

MODEL

V-304-RE Automatic cassette cleaning with **photocell** via G-800 till

TECHNICAL SPECIFICATIONS

Material	AISI 304 stainless steel
Dimensions	W 36 x D 36 x H 120 cm
Thickness	1.2 mm
Water connections	1/2"
Electrical connections	220v

OPTIONAL

V-304-ICE	ICE heating system
V-304-T	Chassis for installation
WC-LED-1	Perimeter LED lighting kit

ADDITIONAL TAP (mounted on the left)

RUB1-PAY	Lever tap with rubber and lance and with timed electric button
RUB1-FLY-PAY	Lever tap with protection and timed electric button



testa-



a-steel

WATER SUPPLY COLUMNS

FUNCTION

The a-steel columns serve all vehicles in need of drinking water.

Though it has a simple function, it is an essential piece of equipment in any rest area, even a small one. In other tourist locations, on the other hand, it may prove to be an additional service that encourages or prolongs stays.

FEATURES

Water is dispensed by means of a lever tap or a push-button-operated lever tap.

The columns can be customised according to the needs of the facility installing them: choices include a free or paid model, the type of tap and other optional extras.

Our water supply columns can even be installed in locations where temperatures drop below zero because the ICE heating system guarantees operation at low temperatures. The system consists of a thermostat-controlled heating cable that maintains the minimum efficient temperature and thus prevents the formation of ice and bursting of pipes.



A-404 free system

AISI 304 stainless steel column for potable water supply by means of a lever tap or push-button-operated lever tap **with free system**.
On request, we **also supply the column with an e-power pay system** (see page 89).



model **A-404**



model **A-404-P**



model **A-404-PS** or **A-404-ICE**

MODELS

A-404	Supply by means of a lever tap with protection
A-404-P	Supply by means of a lever tap with protection and timed electric button

TECHNICAL SPECIFICATIONS

Material	AISI 304 stainless steel
Dimensions	W 36 x D 36 x H 120 cm
Thickness	1.2 mm
Water connections	1/2"
Electrical connections	220v (for A-404-P, A-404-ICE)



OPTIONAL

A-404-T	Chassis for installation
A-404-ICE	ICE heating system with door
A-404-PS	Closing door for tap <i>(photo)</i>
WC-LED-3	Perimeter LED lighting kit

OPTIONAL TAP

R-PRES	Pressure tap for drinking water supply
---------------	--



A-404-PAY pay system

AISI 304 stainless steel column for drinking water supply by means of a button-operated lever tap **with coin or token and/or credit card pay system.**
Perimeter LED lighting included.



MODELS

A-404-PAY	With coin mechanism. Supply by means of a lever tap with protection and timed electric button
A-404-CARD	With credit card reader. Supply by means of a lever tap with protection and timed electric button
A-404-PAY-CARD	With coin mechanism / credit card reader. Supply by means of a lever tap with protection and timed electric button

TECHNICAL SPECIFICATIONS

Material	AISI 304 stainless steel
Dimensions	W 36 x D 36 x H 157 cm
Thickness	1.2 mm
Water connections	1/2"
Electrical connections	220v

OPTIONAL

A-404-T	Chassis for installation
A-404-ICE	ICE heating system with door
A-404-PS	Closing door for drinking water supply tap



model **A-404-PAY**



model **A-404-CARD**



model **A-404-PAY-CARD**

a-steel

A-404-RE remote pay system

AISI 304 stainless steel column for drinking water supply by means of **lever tap with pay system remotely activated via G-800 till** (see page 91), complete with modem and external wireless antenna.

MODEL

A-404-RE Supply by means of a lever tap with **electrical push-button** protection with **remotely operated timer** (G-800 till)

TECHNICAL SPECIFICATIONS

Material	AISI 304 stainless steel
Dimensions	W 36 x D 36 x H 120 cm
Spessore	1.2 mm
Allacci idrici	1/2"
Allacci elettrici	220v

OPTIONAL

A-404-T	Chassis for installation
A-404-ICE	ICE heating system with door
A-404-PS	Closing door for tap
WC-LED-3	Perimeter LED lighting kit



e-steel



e-steel

COLUMNS FOR ELECTRICITY

FUNCTION

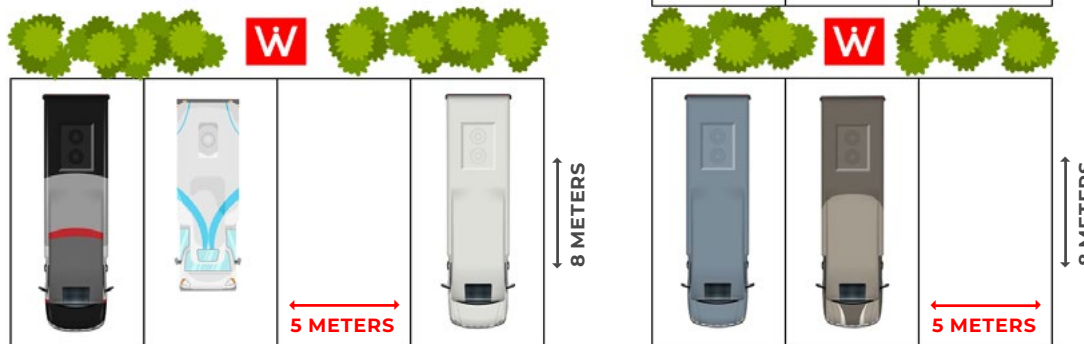
The columns for supplying electricity are essential for those who have to equip rest areas. It's a basic type of equipment that meets the camper driver's primary need for recharging the vehicle's batteries. With the addition of taps the columns also serve as sources of drinking water.

FEATURES

The versatility of e-steel columns makes it possible to offer solutions to a wide range of needs. You can choose the free, paid or remotely activated model, the number of taps and electrical sockets. Our electrical columns can even be installed in locations where temperatures drop below zero because the ICE heating system guarantees operation at low temperatures. The system consists of a thermostat-controlled heating cable that maintains the minimum efficient temperature and thus prevents the formation of ice and bursting of pipes. An anti-condensation system is also available for installations in areas with high humidity levels.

DISTRIBUTION OF SPACES: EACH COLUMN SUPPLIES MULTIPLE REST AREAS

There is no need to install a column at each rest area: all camper vans have a power cable that is at least 25 meters long. Based on this, and taking into account that the rest areas are 5 meters in width, it is calculated that one column can serve up to 6 rest areas at the same time.



E-503 free system

Electrical column made of body-coloured HDPE/ADT techno-polymer, UV-protected, LED lighting, **with free system**. It can have from 2 to 6 16A CEE sockets with 6A thermomagnetic differential protection (RCBO) for each electrical socket. One to four drinking water taps can be added. Available in stippled white and green.



model E-503-B-4P



model E-503-V-4P



model E-503-B-6P

MODELS

E-503-B 2 to 6 16A electrical sockets. **White**

E-503-V 2 to 6 16A electrical sockets. **Green**

TECHNICAL SPECIFICATIONS

Material	HDPE/ADT techno-polymer
Dimensions	W 45 x D 50 x H 142 cm
Electrical socket switches	6 (Amp)
Electrical socket type	Industrial. CEE electrical sockets 2P+E 16A 230Vac IP67
Protection	6A thermomagnetic + differential switches (ID = 30mA)
Master switch	1
Lighting	LED

OPTIONAL ELECTRICITY

E-BIKE	2P+E 16A 230Vac IP68 Schuko electrical sockets for charging electric bicycles
E-LUC	Electrical sockets with padlock CEE 2P+E 16A 230Vac IP44 with padlock flange
COEN	Outdoor electricity meter

OPTIONAL DRINKING WATER

1PA/4PA	Lever tap kit for water supply. 1 to 4 taps
COAC	Water meter



E-503-RE remote activation

Electrical column with **free or pay system that can be activated remotely** via G-801 or G-800 till (pages 90-91). The column is made of body-coloured HDPE/ADT techno-polymer, with UV protection and with LED lighting.

It can have from 2 to 6 16A CEE sockets with 6A thermomagnetic differential protection (RCBO) for each electrical socket.

One to four drinking water taps can be added. Available in stippled white and green.



model E-503-RE-B-4P



model E-503-RE-V-4P

MODELS

E-503-RE-B 2 to 6 16A electrical sockets. **White**

E-503-RE-V 2 to 6 16A electrical sockets. **Green**

TECHNICAL SPECIFICATIONS

Material	HDPE/ADT techno-polymer
Dimensions	W 45 x D 50 x H 142 cm
Electrical socket switches	6 (Amp)
Electrical socket type	Industrial. CEE electrical sockets 2P+E 16A 230Vac IP67
Protection	6A thermomagnetic + differential switches (ID = 30mA)
Master switch	1
Lighting	LED

OPTIONAL ELECTRICITY

E-BIKE 2P+E 16A 230Vac IP68 Schuko electrical sockets for charging electric bicycles

COEN Outdoor electricity meter

OPTIONAL DRINKING WATER

1PA/4PA Lever tap kit for water supply. 1 to 4 taps

COAC Water meter



EP-503 e-power pay system

Column **for paid electricity supply with e-power electrical sockets**. The e-power socket is activated/deactivated directly by the user moving a rechargeable contact key close to the sensor. The operator can choose whether to supply electricity on a time or consumption basis (more info on page 89).

The column is made of body-coloured HDPE/ADT techno-polymer, UV-protected, LED lighting. It can have from 2 to 6 CEE 16A electrical sockets, with 6A thermomagnetic differential protection (RCBO) for each electrical socket.

One to four drinking water taps can be added. Available in stippled white and green.



The e-power electrical socket



model EP-503-V



model EP-503-V-1PA

MODELS

EP-503-B 2 to 6 16A e-power electrical sockets. **White**

EP-503-V 2 to 6 16A e-power electrical sockets. **Green**

TECHNICAL SPECIFICATIONS

Material	HDPE/ADT techno-polymer
Dimensions	W 45 x D 50 x H 142 cm
Electrical socket switches	6 (Amp)
Electrical socket type	E-power CEE electrical sockets <i>(photo)</i> . 2P+T 16A 230Vca IP67
Protection	6A thermomagnetic + differential switches (ID = 30mA)
Master switch	1
Lighting	LED

OPTIONAL DRINKING WATER

1PA/4PA Lever tap kit for water supply. 1 to 4 taps *(photo)*

Steel

E-509-PAY pay system

Electrical column made of body-coloured HDPE/ADT techno-polymer, with UV protection, LED lighting, **with coin or token or credit card pay system**. It can have from 2 to 6 16A CEE sockets with 6A thermomagnetic differential protection (RCBO) for each electrical socket. One to four drinking water taps can be added.

The activation of electrical sockets and taps can also be separated. Available in stippled white and green.



model E-509-CARD-B-6PA



model E-509-PAY-V-6P

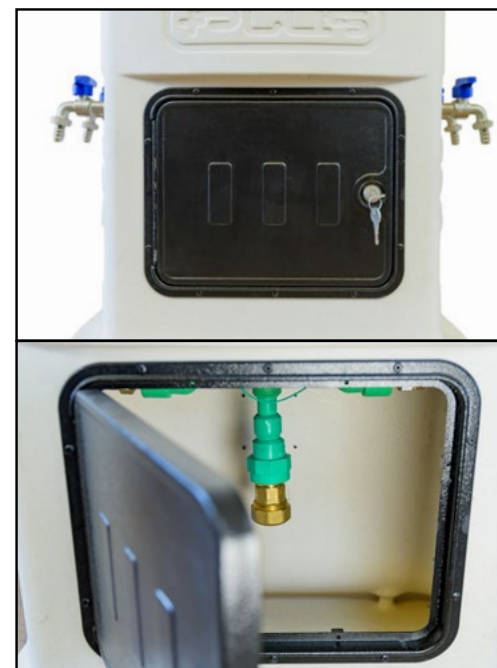
MODELS

E-509-PAY-B/V

2 to 6 16A electrical sockets.
With coin mechanism.
White or green

E-509-CARD-B/V

2 to 6 16A electrical sockets.
With credit card reader.
White or green



The water service panel on the back of the column

TECHNICAL SPECIFICATIONS

Material	HDPE/ADT techno-polymer
Dimensions	W 45 x D 50 x H 142 cm
Electrical socket switches	6 (Amp)
Electrical socket type	Industrial. CEE electrical sockets 2P+E 16A 230Vac IP67
Protection	6A thermomagnetic + differential switches (ID = 30mA)
Master switch	1
Lighting	LED

OPTIONAL

E-PAN-A	Water service panel
E-ICE	ICE heating system

OPTIONAL ELECTRICITY

E-BIKE	2P+E 16A 230Vac IP68 Schuko electrical sockets for charging electric bicycles
COEN	Outdoor electricity meter

OPTIONAL DRINKING WATER

1PA/4PA	Lever tap kit for water supply. 1 to 4 taps
COAC	Water meter

TAP ACTIVATION

E-RUB-PAY	Paid option for single tap
------------------	----------------------------



E-508 free system

Electrical column made of body-coloured HDPE/ADT techno-polymer, UV-protected, **with free system**. It can have from 1 to 4 16A CEE sockets with 6A thermomagnetic differential protection (RCBO) for each electrical socket. One to two drinking water taps can be added. Available in stippled white and green.



model E-508-V-2PA



model E-508-B-4P



model E-508-B-2PA

MODELS

E-508-B 1 to 4 16A electrical sockets. **White** (photo)

E-508-V 1 to 4 16A electrical sockets. **Green**

TECHNICAL SPECIFICATIONS

Material	HDPE/ADT techno-polymer
Dimensions	W 32 x D 40 x H 98 cm
Electrical socket switches	6 (Amp)
Electrical socket type	Industrial. CEE electrical sockets 2P+E 16A 230Vac IP67
Protection	6A thermomagnetic + differential switches (ID = 30mA)
Master switch	1

OPTIONAL

E-508-LED Type 4 LED lighting kit

OPTIONAL ELECTRICITY

E-BIKE	2P+E 16A 230Vac IP68 Schuko electrical sockets for charging electric bicycles
E-LUC	Electrical sockets with padlock CEE 2P+E 16A 230Vac IP44 with padlock flange
COEN	Outdoor electricity meter

OPTIONAL DRINKING WATER

1PA/2PA	Lever tap kit for water supply. 1 to 2 taps
COAC	Water meter



E-508-RE remote activation

Electrical column with **free or pay system that can be activated remotely** (only for electrical sockets) via G-801 or G-800 till (pages 90-91). The column is made of body-coloured HDPE/ADT techno-polymer, with UV protection.

It can have from 1 to 4 16A CEE sockets with 6A thermomagnetic differential protection (RCBO) for each electrical socket.

One to two drinking water taps can be added. Available in stippled white and green.



model E-508-RE-B-4P



model E-508-RE-B-2PA



model E-508-RE-V-4P



model E-508-RE-V-2PA

MODELS

E-508-RE-B 1 to 4 16A electrical sockets. **White**

E-508-RE-V 1 to 4 16A electrical sockets. **Green** (photo)

TECHNICAL SPECIFICATIONS

Material	HDPE/ADT techno-polymer
Dimensions	W 32 x D 40 x H 98 cm
Electrical socket switches	6 (Amp)
Electrical socket type	Industrial. CEE electrical sockets 2P+E 16A 230Vac IP67
Protection	6A thermomagnetic + differential switches (ID = 30mA)
Master switch	1

OPTIONAL

E-508-LED Type 4 LED lighting kit

OPTIONAL ELECTRICITY

E-BIKE 2P+E 16A 230Vac IP68 Schuko electrical sockets for charging electric bicycles

COEN Outdoor electricity meter

OPTIONAL DRINKING WATER

1PA/2PA Lever tap kit for water supply. 1 to 2 taps

COAC Water meter



E-510 free system

Electrical column made of AISI 304 stainless steel, UV-protected, LED lighting, **with free system**. It can have from 2 to 6 16A CEE sockets with 6A thermomagnetic differential protection (RCBO) for each electrical socket. One to four drinking water taps can be added.



model E-510-4P



model E-510-6P



model E-510-4PA

MODEL

E-510 2 to 6 16A electrical sockets

TECHNICAL SPECIFICATIONS

Material	AISI 304 stainless steel
Dimensions	W 36 x D 36 x H 120 cm
Thickness	1.2 mm
Electrical socket switches	6 (Amp)
Electrical socket type	Industrial. CEE electrical sockets 2P+E 16A 230Vac IP67
Protection	6A thermomagnetic + differential switches (ID = 30mA)
Master switch	1
Lighting	LED

OPTIONAL

E-ICE ICE heating system

OPTIONAL ELECTRICITY

E-BIKE	2P+E 16A 230Vac IP68 Schuko electrical sockets for charging electric bicycles
E-LUC	Electrical sockets with padlock CEE 2P+E 16A 230Vac IP44 with padlock flange
COEN	Outdoor electricity meter

OPTIONAL DRINKING WATER

1PA/4PA	Lever tap kit for water supply. 1 to 4 taps
COAC	Water meter



E-510-RE remote activation

Electrical column with **free or pay system that can be activated remotely** via G-801 or G-800 till (pages 90-91). The column is made of AISI 304 stainless steel, with UV protection, and with LED lighting.

It can have from 2 to 6 16A CEE sockets with 6A thermomagnetic differential protection (RCBO) for each electrical socket.

One to four drinking water taps can be added.



model E-510-RE-4P



model E-510-RE-6P



model E-510-RE-4PA

MODEL

E-510-RE 2 to 6 16A electrical sockets

TECHNICAL SPECIFICATIONS

Material	AISI 304 stainless steel
Dimensions	W 36 x D 36 x H 120 cm
Thickness	1.2 mm
Electrical socket switches	6 (Amp)
Electrical socket type	Industrial. CEE electrical sockets 2P+E 16A 230Vac IP67
Protection	6A thermomagnetic + differential switches (ID = 30mA)
Master switch	1
Lighting	LED

OPTIONAL

E-ICE ICE heating system

OPTIONAL ELECTRICITY

E-BIKE 2P+E 16A 230Vac IP68 Schuko electrical sockets for
charging electric bicycles

COEN Outdoor electricity meter

OPTIONAL DRINKING WATER

1PA/4PA Lever tap kit for water supply. 1 to 4 taps

COAC Water meter



E-513 free system

Electrical column **with free system**. The column is made of AISI 304 stainless steel and with LED lighting. It has 2 16A CEE sockets and 1 tap for drinking water.



model E-513-2P1A-CAD

MODEL

E-513-2P1A

Column with 2 electrical sockets and 1 tap

TECHNICAL SPECIFICATIONS

Material	AISI 304 stainless steel
Dimensions	W 12 x D 12 x H 100 cm
Thickness	15/10 mm
Electrical socket type	Industrial. CEE electrical sockets 2P+T 16A 230Vca IP44
Lighting	LED

OPTIONAL

E-513-CAD Drain for grey water outlet

E-513-T Chassis for burial (*photo*)



Chassis for burial (E-513-T)

E-520 free system

Electrical column **with free system**. The column is made of AISI 304 stainless steel and with LED lighting. It has 2 16A CEE sockets, 2 taps for drinking water, 2 grey water drains (*photo*) and the anchoring chassis. It is ideal for long-stay rest areas. In addition to the supply of water and the use of electricity, it also allows grey water drainage.

Note: the pay system does not include any airtight closing parts.

MODEL

E-520-T-2PA Column with 2 electrical sockets and 2 taps

TECHNICAL SPECIFICATIONS

Material	AISI 304 stainless steel
Dimensions	W 36 x D 36 x H 120 cm
Thickness	12/10 mm
Electrical socket type	Industrial. CEE electrical sockets 2P+T 16A 230Vca IP67
Protection	6A thermomagnetic + differential switches (ID = 30mA)
Lighting	LED

Siphons not included



model **E-520-T-2PA**

e-steel

E-511-T-PAY pay system

Electrical column made of AISI 304 stainless steel, with UV protection, LED lighting, with **coin or token or credit card pay system**. It can have from 2 to 4 16A CEE sockets with 6A thermomagnetic differential protection (RCBO) for each electrical socket. One to four drinking water taps can be added. The activation of electrical sockets and taps can also be separated.



model E-511-T-PAY-4P



model E-511-T-PAY-4PA



model E-511-T-CARD-4P

MODELS

E-511-T-PAY 2 to 4 16A electrical sockets. **With coin mechanism** (photo)

E-511-T-CARD 2 to 4 16A electrical sockets. **With credit card reader**

TECHNICAL SPECIFICATIONS

Material	AISI 304 stainless steel
Dimensions	W 36 x D 36 x H 120 cm
Thickness	1.2 mm
Electrical socket switches	6 (Amp)
Electrical socket type	Industrial. CEE electrical sockets 2P+E 16A 230Vac IP67
Protection	6A thermomagnetic + differential switches (ID = 30mA)
Master switch	1
Lighting	LED

OPTIONAL

E-ICE ICE heating system

OPTIONAL ELECTRICITY

E-BIKE 2P+E 16A 230Vac IP68 Schuko electrical sockets for charging electric bicycles

COEN Outdoor electricity meter

OPTIONAL DRINKING WATER

1PA/4PA Lever tap kit for water supply. 1 to 4 taps

COAC Water meter

TAP ACTIVATION

E-RUB-PAY Paid option for single tap



E-512-T-PAY pay system

Electrical column made of AISI 304 stainless steel, with UV protection, LED lighting, **with coin or token and/or credit card pay system**. It can have from 2 to 6 16A CEE sockets with 6A thermomagnetic differential protection (RCBO) for each electrical socket. One to four drinking water taps can be added. The activation of electrical sockets and taps can also be separated.

MODELS

E-512-T-PAY 2 to 6 16A electrical sockets.
With coin mechanism

E-512-T-CARD 2 to 6 16A electrical sockets.
With credit card reader

E-512-T-PAY-CARD 2 to 6 16A electrical sockets.
With coin mechanism and credit card reader

TECHNICAL SPECIFICATIONS

Material	AISI 304 stainless steel
Dimensions	W 36 x D 36 x H 157 cm
Thickness	1.2 mm
Electrical socket switches	6 (Amp)
Electrical socket type	Industrial. CEE electrical sockets 2P+E 16A 230Vac IP67
Protection	6A thermomagnetic + differential switches (ID = 30mA)
Master switch	1
Lighting	LED

OPTIONAL

E-ICE ICE heating system

OPTIONAL ELECTRICITY

E-BIKE 2P+E 16A 230Vac IP68 Schuko electrical sockets for charging electric bicycles

COEN Outdoor electricity meter

OPTIONAL DRINKING WATER

1PA/4PA Lever tap kit for water supply. 1 to 4 taps

COAC Water meter

TAP ACTIVATION

E-RUB-PAY Paid option for single tap





model **E-512-T-PAY-6PA**



model **E-512-T-CARD-6PA**



model **E-512-T-PAY-CARD-6PA**

e-steel

E-502 free system

Electrical column made of body-coloured HDPE/ADT techno-polymer, UV-protected, LED lighting, **with free system.**

It can have from 2 to 6 16A CEE sockets with 6A thermomagnetic differential protection (RCBO) for each electrical socket. One to four drinking water taps can be added. Available in white with blue door.

MODEL

E-502	2 to 6 16A electrical sockets
--------------	-------------------------------

TECHNICAL SPECIFICATIONS

Material	HDPE/ADT techno-polymer
Dimensions	W 26 x D 41 x H 110 cm
Electrical socket switches	6 (Amp)
Electrical socket type	Industrial. CEE electrical sockets 2P+E 16A 230Vac IP67
Protection	6A thermomagnetic + differential switches (ID = 30mA)
Master switch	1
Lighting	LED

OPTIONAL ELECTRICITY

E-BIKE	2P+E 16A 230Vac IP68 Schuko electrical sockets for charging electric bicycles
E-LUC	Electrical sockets with padlock CEE 2P+E 16A 230Vac IP44 with padlock flange
COEN	Outdoor electricity meter

OPTIONAL DRINKING WATER

1PA/4PA	Lever tap kit for drinking water supply. 1 to 4 taps
COAC	Water meter



E-502-RE remote activation

Electrical column made of body-coloured HDPE/ADT techno-polymer, UV-protected, LED lighting, with **a free or pay system, which can be activated remotely** via the G-801 or G-800 till (pages 90-91). It can have from 2 to 6 16A CEE sockets with 6A thermomagnetic differential protection (RCBO) for each electrical socket. One to four drinking water taps can be added. Available in white with blue door.

MODEL

E-502-RE	2 to 6 16A electrical sockets
-----------------	-------------------------------

TECHNICAL SPECIFICATIONS

Material	HDPE/ADT techno-polymer
Dimensions	W 26 x D 41 x H 110 cm
Electrical socket switches	6 (Amp)
Electrical socket type	Industrial. CEE electrical sockets 2P+E 16A 230Vac IP67
Protection	6A thermomagnetic + diff. switches (ID = 30mA)
Master switch	1
Lighting	LED

OPTIONAL ELECTRICITY

E-BIKE	2P+E 16A 230Vac IP68 Schuko electrical sockets for charging electric bicycles
COEN	Outdoor electricity meter

OPTIONAL DRINKING WATER

1PA/4PA	Lever tap kit for water supply. 1 to 4 taps
COAC	Water meter



EP-502 e-power pay system

Column **for paid electricity supply with e-power electrical sockets**. The e-power electrical socket is activated/deactivated directly by the user bringing a rechargeable key contact close to the sensor. The operator can choose whether to supply electricity on a time or consumption basis (more info on page 89).

The column is made of body-coloured HDPE/ADT techno-polymer, UV-protected, LED lighting.

It can have from 2 to 6 CEE 16A electrical sockets, with 6A thermomagnetic differential protection (RCBO) for each electrical socket.

One to four drinking water taps can be added. Available in white with blue door.

MODEL

EP-502	2 to 6 16A electrical sockets
---------------	-------------------------------

TECHNICAL SPECIFICATIONS

Material	HDPE/ADT techno-polymer
Dimensions	W 26 x D 41 x H 110 cm
Electrical socket switches	6 (Amp)
Electrical socket type	E-power CEE electrical sockets 2P+T 16A 230Vca IP67
Protection	6A thermomagnetic + differential switches (ID = 30mA)
Master switch	1
Lighting	LED

OPTIONAL DRINKING WATER

1PA/4PA	Lever tap kit for water supply. 1 to 4 taps
----------------	---



e-power

ACCOUNTING OF SERVICES VIA TRANSPONDER

FUNCTION

The e-power system allows for the monitoring of accesses and energy and water consumption, by using RFID (*radio frequency identification*) technology, which identifies a user and applies a prepaid system.

FEATURES

- The e-power system is based on management software that organises users, payments and associated devices;
- Activation is by means of a transponder (shaped like a key fob), supplied to the user;
- The system also offers the user the possibility of monitoring consumption.

ASSOCIATED DEVICES

- **EP-TRANSP:** transponder supplied to the user. It can be recharged directly by the user via dedicated software, or with a management-controlled desktop decoder (**EP-DEC**).
- **EP-DEC:** desktop decoder device that allows transponders to be read and written by management.
- **EP-LETT:** wall-mounted access control reader allowing the detection and reading of transponders for the activation of available services, such as:
 - Barriers
 - Shower doors opening (free)
 - Pedestrian gates
 - Locks
- **EP-DOCCE:** reader that controls timed water delivery, usually applied to the shower service (**PAY-CONTROLLER** flange 12x12 cm).
- **E-POWER ELECTRICAL SOCKET:** electrical socket with integrated system for monitoring energy and water usage. The electrical sockets are electrically interlocked. CEE electrical socket 2P+E 16A 230Vac IP67.



E-POWER ELECTRICAL SOCKET



EP-TRANSP



EP-DEC



EP-DOCCE



EP-LETT

g-steel

MANAGEMENT SYSTEMS

FUNCTION

The pay system offered by Camper Wc Wash makes it possible to manage payments and access to all camper services.

They use tills with coin or credit card pay systems which work remotely with a wireless connection: no need to lay any cables in the facility.

FEATURES

The g-steel system can manage:

1. electricity use
2. drinking water supply
3. camper service (black and grey water drainage)
4. timed stay (produces a receipt)
5. showers
6. open doors

Our boxes/management tills can be customised according to the needs of the facility installing them. In addition to the payment method, one can choose to offer free services, and management can be time- or consumption-based.

An anti-condensation system is also available for installations in areas with high humidity levels.

G-801

BOX FREE SYSTEM WIRELESS REMOTE MANAGEMENT

Painted sheet steel box with polycarbonate panel for managing the electrical supply **with free system**. It works with an antenna to be placed outside the building.

TECHNICAL SPECIFICATIONS

Material	Steel painted white
Dimensions	W 40 x D 20 x H 30 cm
Electrical connections	220v



G-801



G-800

REMOTE CASH MANAGEMENT SYSTEM WITH EXTERNAL ANTENNA

Cash management system **for managing payments with coins or tokens and/or credit cards.**

The till can manage payments for:

- Use of electricity / taps
- Camper service (sewage and grey water drainage)
- Timed stay (produces parking receipt)

MODELS

G-800-PAY	With coin mechanism
G-800-CARD	With credit card reader
G-800-PAY-CARD	With coin mechanism / credit card reader

TECHNICAL SPECIFICATIONS

Material	Iron painted white, embossed
Dimensions	W 30 x D 60 x H 175/185 cm
Electrical connections	220v

OPTIONAL

G-800-AP	Canopy to protect the till
-----------------	----------------------------



1-steel



l-steel

MULTI-PURPOSE WASH BASINS

FUNCTION

Our multi-purpose wash basins have recently become part of the Camper Wc Wash line. They are the result of the continuous attention we pay to the needs of the market and our customers.

In fact, they're designed for those facilities that need a dishwashing area but don't have a large space available, or that don't want to build a bulky structure to house traditional wash basins.

With their compact dimensions, our wash basins prove to be very useful for any type of user, and even essential: they make it possible to concentrate all the services needed for outdoor living in one place. A type of equipment that doesn't take away space from the rest area and doesn't affect the view.

It's an innovative piece of equipment:

- 1. It can be installed outdoors.** Unlike normal wash basins placed inside toilets or indoors, our wash basins are UV-resistant and can therefore be installed in any outdoor area.
- 2. It's not just a sink.** Our wash basin can be customised with other amenities such as additional taps for drinking water and electrical sockets.

By choosing to install several combined wash basins, any facility can create a practical multifunctional point for all needs in a very small space.

FEATURES

The wash basins can be customised as required: you can choose the number of taps and the type of electrical sockets.



L-700

Multi-purpose wash basin in body-coloured HDPE/ ADT anti-UV techno-polymer with UV protection complete with basic tap, **with free system.** The following can be added: 1 to 6 CEE-type electrical sockets with 6A thermomagnetic differential protection (RCBO) for each socket; 1 to 4 taps for drinking water. Available in white or granite.



model L-700-LAV-B



model L-700-LAV-G-4PA

MODELS

L-700-LAV-B Multi-purpose wash basin. **White**

L-700-LAV-G Multi-purpose wash basin. **Granite**

TECHNICAL SPECIFICATIONS

Material	HDPE/ADT techno-polymer
Dimensions	W 87 x D 65 x H 92 cm
Electrical socket switches	6 (Amp)
Electrical socket type	Industrial. CEE electrical sockets 2P+E 16A 230Vac IP67
Protection	6A thermomagnetic + differential switches (ID = 30mA)
Master switch	1

OPTIONAL

L-700-LED 4 LED lighting kit

OPTIONAL ELECTRICITY

1P/6P	1 to 6 16A electrical sockets
E-LUC	Electrical sockets with padlock CEE 2P+E 16A 230Vac IP44 with padlock flange
COEN	Outdoor electricity meter

OPTIONAL DRINKING WATER

1PA/4PA	Lever tap kit for water supply. 1 to 4 taps
COAC	Water meter



f-steel

FIRE-FIGHTING COLUMNS

F-601

Fire-fighting column with approved fire extinguisher/rubber holder. The column is made of body-coloured HDPE/ADT techno-polymer, with UV protection and night lighting.

MODELS

F-601 Column with fire extinguisher holder

F-601-M Column with:

- Fire protection pitch shut-off valve
- Type-approved 20 m hose
- Type-approved triple-effect lance

TECHNICAL SPECIFICATIONS

Material HDPE/ADT techno-polymer

Dimensions W 26 x D 41 x H 110 cm

Lighting LED



c-steel

TANKS

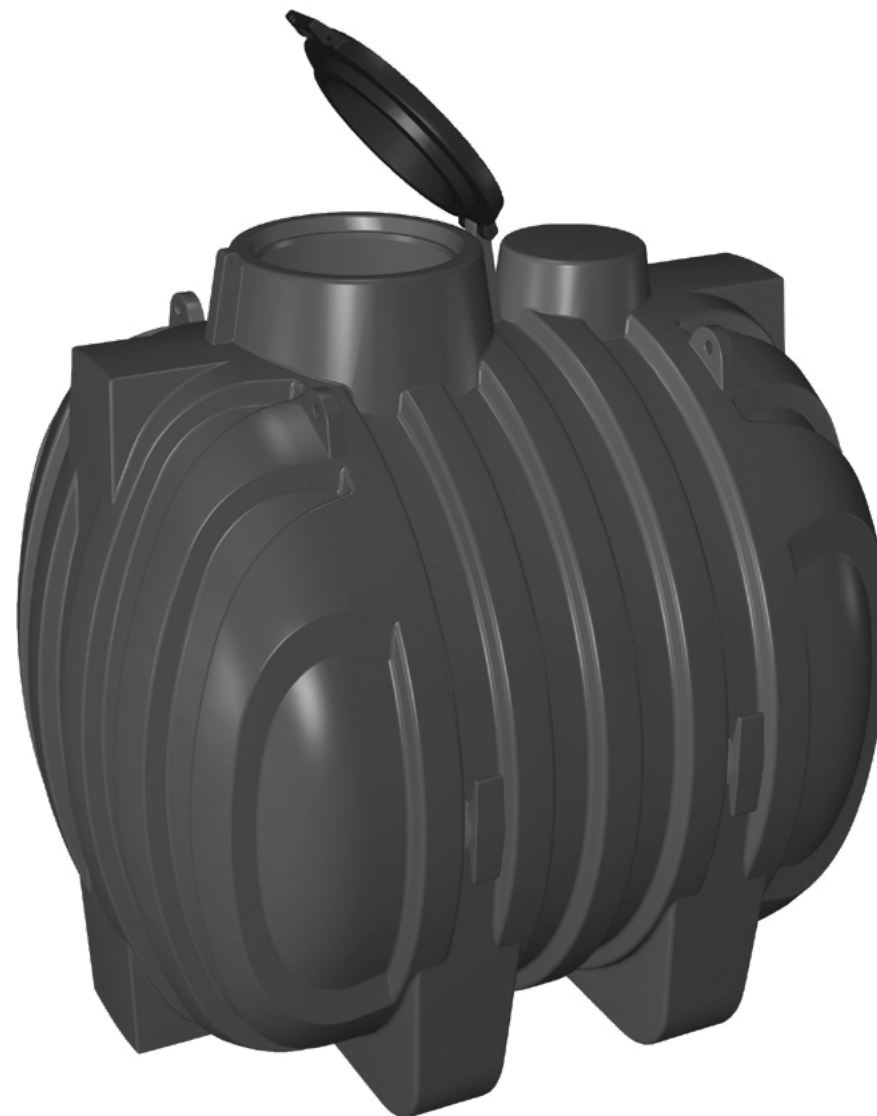
The c-steel series comprises underground tanks and cisterns in linear low-density polyethylene (LLDPE) for the storage of wastewater from campers. They are equipped with one or more (depending on the model) flip-up service caps. For some models a modular extension can be requested as an option.

MODELS

C-701	Capacity: 3 m ³ Size: Length 209 x Depth 150 x Height 172 (cm). Diameter: 63 cm
C-702	Capacity: 5 m ³ . Size: Length 242 x Depth 192 x Height 210 (cm). Diameter: 63 cm
C-703	Capacity: 11 m ³ . Size: Length 278 x Depth 243 x Height 258 (cm). Diameter: 63 cm
C-704	Capacity: 15 m ³ . Size: Length 562 x Height 220 (cm). Diameter: 21 cm

OPTIONAL

C-PR	Modular extension
-------------	-------------------



c-steel

o-steel



o-steel

ACCESSORIES

O-801

Sanitising kit

Sanitising kit consisting of an immersion pump, canister and sanitising liquid (2 x 5 litre canisters). The S-210 service column can be equipped with this kit that allows injecting a percentage of sanitising liquid into the water, cleaning the dumping area and conveying any residues into the appropriate slot.



O-802

Sanitising liquid

Sanitising liquid assortment consisting of 2 canisters with a capacity of 5 litres.



O-803

Cleaning system

Cleaning system with polyethylene tank to be placed in a concrete manhole, submersed pump and float switch. This system is recommended when water pressure is insufficient for proper cleaning of the drain. Capacity: 500 litres.



O-804

Sign

Sign to be installed near the dumping area *(photo)*.

Size: W 60 x H 90 cm.



O-806

Road sign

Road sign indicating the presence of a camper service nearby. Equipped with an arrow to indicate straight ahead or the direction to turn.

Size: W 125 x H 25 cm.



CAMPER WC WASH®
is a trademark of Sela Cars



Registered office and production site

Sela Cars s.r.l.
Via Masetti, 40
47122 Forlì (FC) ITALY
VAT/Tax no. 02021820408
SDI: SUBM70N

Phone

+39 0543 798315

Email

info@camperwcwash.com

www.camperwcwash.com

*Camper Wc Wash exhibits at major camper
and tourism trade shows.*

CAMPER[®]



A
S
H

A photograph of a Camper Wc Wash station situated on a grassy hillside. The station consists of a yellow hose reel and a grey control unit with a red top. The control unit has a sign with a truck icon and a red arrow pointing down. In the background, there are dense evergreen forests and a large, rocky mountain peak under a clear blue sky.

The Camper Wc Wash brand was launched in 2002, the first in Europe to offer a complete range of specific equipment for camper services. In just a few years the drain became essential for any equipped rest area. The equipment provided by Camper Wc Wash can be found installed not only in service or rest areas in tourist destinations, but also in holiday farms, resorts, shopping centres, sports facilities and attractions. Local governments find the Camper Wc Wash brand to be a practical ally helping to maximise tourism in their local areas. Camper Wc Wash has been a supplier to Autostrade per l'Italia and major oil companies since 2008.